

UNIFY KARAOKE SOFTWARE

User Guide

Your best karaoke solution

Powered by Unify Technologies, all right reserved

Information in this document is accurate up to the time of publication, but does not necessarily reflect the enhancements made to products of Unify Technologies, which are released without notice. The software described in this document is furnished under a license agreement. It is against the law to copy the software on any medium except as specifically allowed in the license or nondisclosure agreement. No part of this guide may be reproduced or transmitted in any form or by any means, electronic or mechanical, including photocopying, recording, or information recording and retrieval systems, for any purpose other than the licensed operator's personal use, without the express written permission of **Unify Technologies**.

Table of Contents

1 INTRODUCTION	1
1.1 MAIN MODULES.....	1
1.1.1 <i>Media Manager</i>	1
1.1.2 <i>Karaoke Jukebox</i>	1
1.1.3 <i>Karaoke Remote</i>	2
1.2 IMPORTANT CONCEPTS.....	3
1.2.1 <i>Media File</i>	3
1.2.2 <i>Song</i>	3
1.2.3 <i>Songbook</i>	3
1.2.4 <i>Karaoke Library</i>	3
1.2.5 <i>Song Information</i>	3
1.2.5.1 <i>Song Index</i>	3
1.2.5.2 <i>Song Title</i>	4
1.2.5.3 <i>Searching Letter</i>	4
1.2.5.4 <i>Total Chars</i>	5
1.2.5.5 <i>Artist1, Artist2, Artist3</i>	5
1.2.5.6 <i>Artist Searching Letter1, Artist Searching Letter2,</i> <i>Artist Searching Letter3</i>	6
1.2.5.7 <i>Grade</i>	6
1.2.5.8 <i>Popularity</i>	7
1.2.5.9 <i>Music Channel</i>	7
1.2.5.10 <i>Audio Gain</i>	8
1.2.5.11 <i>Driver</i>	9
1.2.5.12 <i>Library Name</i>	10
1.2.5.13 <i>Disc Id</i>	10
2 SOFTWARE INSTALLATION.....	11
2.1 BASIC REQUIREMENT.....	11

2.2	ADVANCED REQUIREMENT.....	11
2.3	INSTALL KARAOKE SOFTWARE.....	11
2.4	ACTIVATE THE SOFTWARE.....	12
2.4.1	<i>Activate with Register Code.....</i>	<i>12</i>
2.4.2	<i>Activate with USB Register Key.....</i>	<i>12</i>
3	MEDIA MANAGER GUIDE	16
3.1	USER INTERFACE.....	16
3.2	COLLECT AND SET UP SONGS BY YOURSELF.....	18
3.2.1	<i>Purchase Karaoke Disc from Video Shop or Download Media Files from Internet.....</i>	<i>18</i>
3.2.2	<i>Add Media Files to Songbook.....</i>	<i>18</i>
3.2.2.1	Add Media Files from Hard Disk to Songbook	18
3.2.2.2	Add Media Files from VCD Disc to Songbook	19
3.2.2.3	Add Media Files from DVD Disc to Songbook	19
3.2.2.3.1	Hardware Requirement	19
3.2.2.3.2	Install DVD Tool	20
3.2.2.3.3	Copy Media Files from DVD Disc	20
3.2.2.3.4	Add Media Files to Songbook.....	20
3.2.2.4	Add Media Files from CDG Disc to Songbook	20
3.2.2.4.1	Hardware Requirement	20
3.2.2.4.2	Install CDG Tool	21
3.2.2.4.3	Copy Media Files form CDG Disc	22
3.2.2.4.4	Add Media Files to Songbook.....	22
3.2.2.5	Add Media Files from CD Disc to Songbook...22	
3.2.2.5.1	Copy Media Files from CD Disc	22
3.2.2.5.2	Add Media Files to Songbook.....	22
3.2.2.6	Add Media Files from LD Disc to Songbook...23	
3.2.2.6.1	Hardware Requirement	23
3.2.2.6.2	Get Media Files from LD Disc	23
3.2.2.6.3	Add Media Files to Songbook.....	23

3.2.3 <i>Input Song Information Manually</i>	23
3.2.3.1 Show Edit Window.....	23
3.2.3.2 Preview a Song.....	23
3.2.3.3 Input Song Information.....	23
3.2.3.4 Set Up Artist Image.....	23
3.2.4 <i>Batch Update Song Information</i>	24
3.2.4.1 Index Selected Songs.....	24
3.2.4.2 Change Case for Selected Songs.....	24
3.2.4.3 Convert Chinese for Selected Songs.....	24
3.2.4.4 Count Total Chars for Selected Songs.....	24
3.2.4.5 Set Searching Letters for Selected Songs.....	25
3.2.4.6 Rename Media File for Selected Songs.....	25
3.2.4.7 Replace String for Selected Songs.....	25
3.2.5 <i>Check Media File</i>	25
3.2.6 <i>Check Duplicate Songs in one Songbook</i>	25
3.2.7 <i>Delete songs from Songbook</i>	26
3.2.8 <i>Delete songs from Songbook and harddisk</i>	26
3.2.9 <i>Delete All Songs of a Library from Songbook</i>	26
3.3 SET UP SONGS FROM PURCHASED KARAOKE LIBRARY	26
3.3.1 <i>Install Karaoke Library on Your Computer</i>	26
3.3.2 <i>Add Songs from Library</i>	27
3.3.3 <i>Add Songs from old Songbook</i>	27
3.4 BACKUP SONGBOOK.....	27
3.5 RESTORE SONGBOOK.....	27
3.6 EXPORT SONGS FROM SONGBOOK TO A LIBRARY.....	28
3.7 COMPARE SONGBOOK AND LIBRARY.....	28
3.8 COMPARE 2 LIBRARIES.....	29
3.9 TRANSFER SONGS BETWEEN SONGBOOK AND LIBRARY...	29
3.10 TRANSFER SONGS BETWEEN 2 LIBRARIES.....	29
3.11 FORCE UPGRADE LIBRARY.....	30
3.12 ENJOY YOUR SONGS.....	30

3.12.1 Play Songs with Media Manager	30
3.12.2 Play Media Files with Media Manager.....	30
3.12.3 More Playing Options	30
3.12.4 Send Songs to Karaoke Jukebox	30
3.12.5 Send Media File to karaoke Jukebox.....	30
3.13 PRINT OUT SONGBOOK.....	30
3.14 SETUP MEDIA MANAGER.....	31
3.14.1 Setup Media File Searching Filter	31
3.14.2 Setup Drivers Searching Router.....	32
3.14.3 Setup Index Range of Songs.....	33
3.14.4 Setup Font.....	33

4 KARAOKE JUKEBOX GUIDE35

4.1 USER INTERFACE.....	35
4.2 PLAY MEDIA FILES	37
4.2.1 Play Media Files Directly.....	37
4.2.2 Search and Play Media Files in a Folder.....	37
4.2.3 Search and Play Media Files in Hard Disk.....	37
4.2.4 Play VCD/DVD Disc	38
4.2.5 Search and Play Media Files in My Computer Window.....	38
4.2.6 Play Media File from Media Manager.....	38
4.3 ORDER SONGS.....	38
4.3.1 Order Songs by Index.....	38
4.3.2 Order Songs by Title.....	39
4.3.3 Order Songs by Artist	40
4.3.4 Order Songs by Language	41
4.3.5 Order Songs by Category	42
4.3.6 Order Songs by Char Number	43
4.3.7 Order Songs by Popularity	43
4.3.8 Order Songs by Alphabet.....	44

4.4 CONTROL PLAYING	45
4.4.1 <i>Previous Program</i>	45
4.4.2 <i>Next Program</i>	45
4.4.3 <i>Fast Backward/Fast Forward</i>	45
4.4.4 <i>Play/Pause</i>	45
4.4.5 <i>Stop</i>	45
4.4.6 <i>Eject</i>	45
4.4.7 <i>Step Backward/Step Forward</i>	45
4.4.8 <i>Speed</i>	45
4.4.9 <i>Repeat All</i>	45
4.4.10 <i>Repeat One</i>	46
4.4.11 <i>Only Play First 10 Seconds</i>	46
4.4.12 <i>Play Randomly</i>	46
4.4.13 <i>Time Searching</i>	46
4.4.14 <i>Loop Playing</i>	46
4.4.15 <i>Show Prefix Screen before Every Program</i>	46
4.4.16 <i>Hint for Next Program in 30 Seconds</i>	46
4.5 CONTROL AUDIO.....	47
4.5.1 <i>Control Music Volume</i>	47
4.5.2 <i>Control Microphone Volume</i>	47
4.5.3 <i>Control Key</i>	47
4.5.4 <i>Track Selector</i>	47
4.5.5 <i>Channel Selector</i>	47
4.5.6 <i>Music Channel Settings</i>	47
4.5.7 <i>Vocal On/Off</i>	48
4.6 CONTROL PLAYLIST	48
4.6.1 <i>Jump to a Program in Playlist</i>	48
4.6.2 <i>Give Priority to a Program</i>	48
4.6.3 <i>Delete a Program from Playlist</i>	49
4.6.4 <i>Clear Playlist</i>	49
4.6.5 <i>Auto Delete Played Program from Playlist</i>	49

4.6.6 Auto Clear Playlist while Exit.....	49
4.7 THEME.....	49
4.7.1 Change Theme.....	50
4.7.2 Create New Theme	51
4.8 SINGLE SCREEN VS. DUAL SCREEN	51
4.8.1 Working with Single Screen.....	51
4.8.2 Working with Dual Screen.....	52
4.8.2.1 Install 2nd Video Device	52
4.8.2.2 Enable Dual Screen in Jukebox.....	53
4.9 DEFINE KEYBOARD.....	53
4.10 EXIT SYSTEM, RESTART AND POWER OFF COMPUTER	54
4.11 CONTROL KARAOKE JUKEBOX FROM MENU WINDOW ...	54
5 MULTIPLE LANGUAGES	55
5.1 KNOWLEDGE BASE ABOUT LANGUAGE AND OS	55
5.1.1 Enable a Language in OS.....	55
5.1.1.1 Enable a Language in Windows2000	55
5.1.1.2 Enable a Language in WindowsXP.....	56
5.1.2 Set a Language as Default Language in OS.....	57
5.1.2.1 Set a Language as Default Language in Windows2000	57
5.1.2.2 Set a Language as Default Language in WindowsXP.....	58
5.2 CHANGE INTERFACE LANGUAGE.....	58
5.3 TRANSLATE THE SOFTWARE TO ANY LANGUAGE	60
5.4 INPUT SONG TITLE AND ARTIST NAME IN ANY LANGUAGE	60
5.5 OPEN A KARAOKE LOUNGE FOR INTERNATIONAL CUSTOMERS SPEAKING DIFFERENT LANGUAGE	60
6 ADVANCED EQUIPMENTS	62

6.1 KARAOKE REMOTE	62
6.1.1 Hardware Installation	62
6.1.2 Driver Installation.....	62
6.1.3 Set Up COM Port.....	62
6.1.4 Set Up Keypad of the Remote.....	62
6.1.5 Use Karaoke Remote	63
6.2 BARCODE SCANNER	64
6.2.1 Hardware Installation	64
6.2.2 Use Barcode Scanner	65
6.3 TOUCH SCREEN.....	65
6.3.1 Hardware Installation	65
6.3.2 Driver Installation.....	65
6.3.3 Use Touch Screen.....	65
6.4 KARAOKE MIXER.....	65
6.4.1 Install Karaoke Mixer.....	66
7 ADDITIONAL FEATURES ON HOME EDITION	69
7.1 ADD MORE THAN 2000 SONGS IN SONGBOOK.....	69
7.2 ADD MORE THAN 10 SONGS IN PLAYLIST	69
7.3 EDIT MORE THAN 2000 SONG INFORMATION TOGETHER.	69
7.4 SEARCH MORE THAN 2000 MEDIA FILES ON HARD DISK	69
7.5 SUPPORT NETWORK PLAYING.....	69
7.6 STATION GRADE	69
7.7 CAN BE ACTIVATED BY USB REGISTER KEY.....	69
7.8 SECURITY FEATURE	69
7.8.1 Access Media Manager	70
7.8.2 Access Options Window of Karaoke Jukebox.....	70
7.8.3 Access Admin Page of Menu Window	70
7.8.4 Change user password	71
8 ADDITIONAL FEATURES ON BUSINESS EDITION..	73

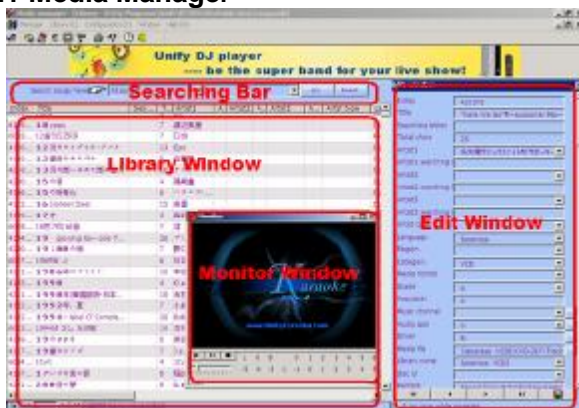
8.1 MAIN FEATURES.....	73
8.2 SET PAYMENT SYSTEM.....	73
8.2.1 <i>Set Payment System Mode</i>	74
8.2.2 <i>Set Price of Song Credit</i>	74
8.2.3 <i>Set Price of Time Credit</i>	74
8.3 SET COIN SELECTOR	74
8.3.1 <i>Install Coin Selector</i>	74
8.3.2 <i>Enable Coin Selector</i>	74
8.3.3 <i>Set Coin Value</i>	74
8.3.4 <i>Set Price of Coin</i>	75
8.3.5 <i>Insert a Coin</i>	75
8.3.6 <i>Insert Coins</i>	75
8.4 SETUP CREDIT.....	75
8.4.1 <i>Add Song Credit</i>	75
8.4.2 <i>Add Time Credit</i>	76
8.4.3 <i>Clear unused Credit</i>	76
8.5 CASHBOX SYSTEM	76
8.5.1 <i>Audit Cashbox</i>	76
8.5.2 <i>Clear Cashbox</i>	76
8.6 ADVERTISEMENT SYSTEM	77
8.7 SECURITY FEATURE	77
8.7.1 <i>Access Media Manager</i>	78
8.7.2 <i>Access Options Window of Karaoke Jukebox</i>	78
8.7.3 <i>Access Admin Page of Menu Window</i>	78
8.7.4 <i>Access Waiter Page of Menu Window</i>	79
8.7.5 <i>Manage User and Password</i>	80

1 Introduction

1.1 Main Modules

Unify Karaoke Jukebox Software consists of blew modules.

1.1.1 Media Manager



It searches media files stored in your hard disk. It copies media files from compact disc to hard disk or marks the disc. You can preview and test the media files. You can input index, title, artist, artist type, language, region, category, media format, grade ... and etc for every media file. After that, you can organise, classify, sort and search them at any time. You also can print out songbook in your favourite style.

With Media Manager, you can order new songs online easily. You also can exchange songs with your friends to expand your collection.

1.1.2 Karaoke Jukebox

Karaoke Jukebox searches a song by index, title, artist, artist type, language, region, category, media format, grade ... and plays the song. It provides beautiful, clear and friendly user interface. Your family members and friends can order their favourite songs without knowing any computer knowledge. They can search songs with printed songbook while they do not like use computer or there are lots of people waiting for ordering songs. Your songs will bring happiness to lots of people.



If there are too many songs to remember song title clearly, how to find the song? Do not worry, try searching by alphabet, you only need input a few leading letters (use <?> and <*> instead of forgotten letters), Karaoke Jukebox will find the song for you.

Karaoke Jukebox can work in single screen mode, which you can order songs and play them on your pc monitor. Karaoke Jukebox also can work in dual screen mode if you feel that the pc monitor is too small. You can order songs on pc monitor and play them on a big TV or projector to enjoy your songs with more people.

Karaoke Jukebox works with IR remote controller, barcode scanner and touch screen. Forget mouse and keyboard! Anybody without any computer experience can use it easily!

1.1.3 Karaoke Remote

Karaoke Remote works like a TV controller. It will control Karaoke Jukebox from about 8 metres distance. You do not need to sit in front of your pc any more. With it, you can order songs, adjust volume, control playing and do almost everything, even turn off your pc! In a simple word, you can use computer like the way you use TV.

Karaoke Remote includes a remote controller, an inferred receiver and remote driver. You can order Karaoke Remote with Karaoke Jukebox software in one package.



1.2 Important Concepts

1.2.1 Media File

Media file is video/audio file, which can be played by Karaoke Jukebox. (e.g. DVD file, VCD file, MP3 file ...), all media files are stored in hard disk or compact disc.

1.2.2 Song

A karaoke song contains two parts, media file (stored in hard disk or compact disc) and song information (stored in songbook)

1.2.3 Songbook

Songbook is a special database, collects all information of songs for management and ordering. Media Manager manages it. You can load/unload a library into songbook.

1.2.4 Karaoke Library

Karaoke library is a hard disk contains many songs (include media files and their song information). All songs in karaoke library can be loaded into your songbook very easily. You can build karaoke library by yourself or purchase it from us.

1.2.5 Song Information

Song information, including index, title, artist, artist type, language, region, category, media format, grade, and other information of media files, is the most important part of songs. You can find any song easily in Karaoke Jukebox by song information. Song information is stored in songbook or library.

1.2.5.1 Song Index

- Song index is a unique number assigned to every song in songbook. Every song should have its index. Without song index or song index is zero, the song neither can be found nor can be played in Karaoke Jukebox.



- Do not forget to print song index while you are printing songbook. When you find a song in songbook, just input its index into Karaoke Jukebox to order the song.

- You can print out song index in barcode format too. This is called barcode songbook. To order a song, just scan barcode of the song index with barcode scanner.
- Any integer greater than 0 is legal for song index in principle. You can set Minimum Index and Maximum Index in options menu to limit the range of song index. For example, if only 6-digital-integer is allowed, you can set Minimum Index to 100000 and Maximum Index to 999999. So that any other integers are treated as illegal index.

1.2.5.2 Song Title

- It is the title of a song, which supports multiple languages.



1.2.5.3 Searching Letter

- It is an auxiliary letter to search songs more quickly.
- For English songs, you can set first letter of song title as searching letter. For example, set <BOMT> for <BABY ONE MORE TIME>, then you only need to input <BOMT> to find the song.
- You also can set up entire word of song title as searching letter. For example, set <BABYONEMORETIME> for <BABY ONE MORE TIME>
- For Chinese songs, you can set fist letter of PinYin as searching letter. For example, set <DAYCXG> for <當愛已成習慣>
- For Japanese songs, you can set <プラスノア> for <遣らずの雨>
- For Korean, you can set <ㄱㄷㄹㅁㅂ> for <그대 먼곳에>
- In fact, you can set up searching letter according to any rule, only if the rule can be understand by the most people. They only need input searching letter

to find the song they want.



1.2.5.4 Total Chars

- It is total char number of song title. You can search songs by it.



1.2.5.5 Artist1, Artist2, Artist3

- You can search songs by artist. A song accepts 3 artists at mostly, you can search song by any of artist.



1.2.5.6 Artist Searching Letter1, Artist Searching Letter2, Artist Searching Letter3

- Searching letter to find an artist quickly.



1.2.5.7 Grade

- It can be divided into four levels: 0 (lowest grade), 1, 2 or 3 (highest grade). Karaoke Jukebox also has its grade (it is called station grade). Jukebox only searches and plays song with lower grade. For example, if grade of Jukebox is set to 0, the Jukebox will not play songs with grade greater than 0.
- This option avoids your children to watch some program which is unfit for them.
- This option also avoids other person to watch any sensitive program without your authorization.



1.2.5.8 Popularity

- It includes 0 (lowest popularity) to 5 (highest popularity). When you order songs by popularity, the song with higher popularity will always be placed on top.



1.2.5.9 Music Channel

- There are two channels on a common karaoke media file - left channel and right channel. Some songs store music on left channel and vocal on right channel while other songs store music on right channel and vocal on left channel. So you need set up music channel according to the media file. When you set Karaoke Jukebox to vocal off mode, the Jukebox will try to play music channel of the song. When you set Karaoke Jukebox to vocal on mode, Jukebox will switch to another channel.
- If the song is not a karaoke song, switching channel will not switch vocal on or off. The music channel has no meaning to this song. Just set music channel to empty or B (both channel).
- For example, after listening a song in Monitor Window, we found music is stored on left channel of the song, vocal is stored on right channel of the

song. So we need set music channel to L (left channel) in Media Manager.



- Do not forget to check Jukebox -> Menu -> Audio -> Music channel settings -> According to settings in media manager



- After that, when the song is playing, Jukebox set up its Music channel settings according to settings of music channel in Media Manager. If users do not need vocal and select vocal off mode, Jukebox will play the music channel. If users need vocal and select vocal on mode, jukebox will play another channel.
- To DVD or MPEG2 songs, they are using track instead of channel. A DVD song may have 8 tracks at mostly, but track 0 and track 1 is frequent used. So you need set music channel to 0 (track 0) or 1 (track 1) for DVD songs.

1.2.5.10 Audio Gain

- If your songs come from many recording companies, different company have different recording equipments, the volume level of songs might be different too. When all songs are listed in playlist and are played in

sequence, you will find some songs have high volume while others have low volume. To avoid this problem, audio gain is need to be set up in Media Manager in advance.

- Audio gain indicates Jukebox to increase or decrease music volume while playing a song.
- If a song has average volume level, neither high nor low, you can set its audio gain to 0. That indicates the music volume does not need to be adjusted while playing the song.
- If a song has low volume level, you should set its audio gain to 1, 2, 3, 4 or 5, which indicates music volume needs to be increased while playing the song. New volume will be 120%, 140%, 160%, 180% or 200% of the original volume.
- If a song has high volume level, you should set its audio gain to -1, -2, -3, -4 or -5, which indicates music volume needs to be decreased while playing the song. New volume will be 90%, 80%, 70% 60% or 50% of the original volume.



- Notice: positive audio gain is limited by music volume range of Jukebox. Music volume range is 0 to 100. If current music volume of Jukebox is 50, audio gain of the song is 5, music volume will be adjusted to 100 (200% of original volume). But if current music volume of Jukebox is 100 already, when same song is been playing, music volume will NOT be adjusted to 200 (200% of original volume), because maximum of music volume is 100.

1.2.5.11 Driver

- Hard disk in which media file is stored. For example C:, D:, E:...

- If media file is stored on a media server, you can put server name here. For example \\KtvServer1, \\KtvServer2 ...

1.2.5.12 Library Name

- If you have more than one library, this is name of the library to store the media file.

1.2.5.13 Disc Id

- If your media file is stored on a disc, this is the label of the disc.

2 Software Installation

2.1 Basic Requirement

- Intel Pentium or compatible CPU
- 64 MB RAM or above
- 20M free hard disk space
- Graph card
- Sound card
- Keyboard/mouse
- VGA monitor
- Windows 2000/XP/2003
- Internet Explorer 5.0 with SP1 or above.
- Microsoft excel 2000 or above (for songbook printing)

2.2 Advanced Requirement

Below equipment will provide more functions to your system

- Free COM port (for Karaoke Remote)
- CDG compatible CD-ROM or DVD-ROM (if you need to rip songs from CDG discs, available at our website)
- 2nd graph card with SVHS/AV output (if you need watch video on TV or projector, it is available at our website)
- Colour TV with SVHS/AV input (if you need watch video on TV)
- Sound system (amplifier + sound box, it is available at our website)
- Printer (for songbook printing)
- Karaoke microphone (it is available at our website)
- Wireless karaoke microphone (it is available at our website)
- Barcode songbook & scanner (available at it is available at our website)
- Touch screen (it is available at our website)
- Karaoke disc or library to enjoy (it is available at our website)

2.3 Install Karaoke Software

1. Insert setup disc into CD-ROM and double click <setup.exe> file
2. Or download latest software from our website and run it to install.
3. Follow the instruction of the setup file.

2.4 Activate the Software

- You can download and trial our karaoke system freely in 30 days before activate. Most functions are available in trial version.
- If you like our software and decide to use it after 30 days, please purchase and activate it.

2.4.1 Activate with Register Code

1. Install Karaoke Jukebox Software
2. Click Windows -> Start -> Program files -> Unify Karaoke Jukebox -> Software Register to get your serial number.
3. Follow the instruction step by step to activate the software.

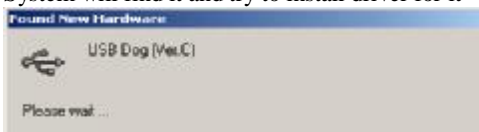


2.4.2 Activate with USB Register Key

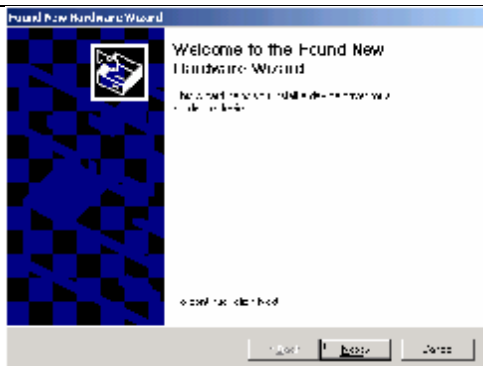
1. You can purchase USB register key with Unify Karaoke Jukebox Software.



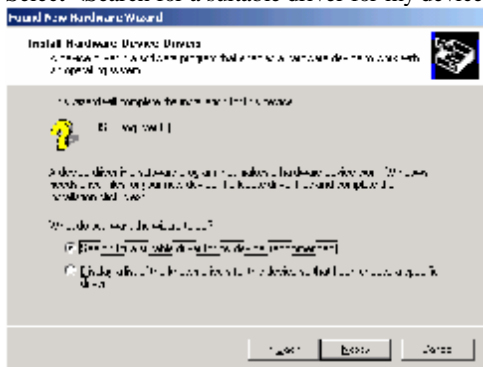
2. After installed karaoke software, plug it into a free USB port of your pc.
3. System will find it and try to install driver for it



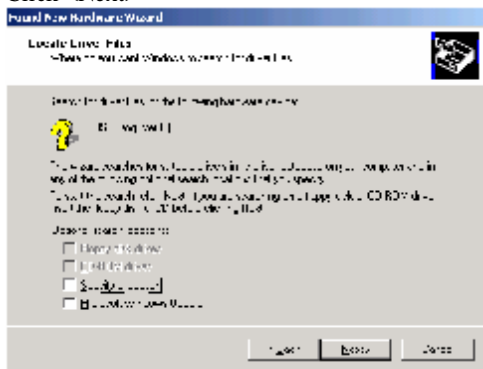
4. Click <Next> to start



5. Select <Search for a suitable driver for my device> and click <Next>



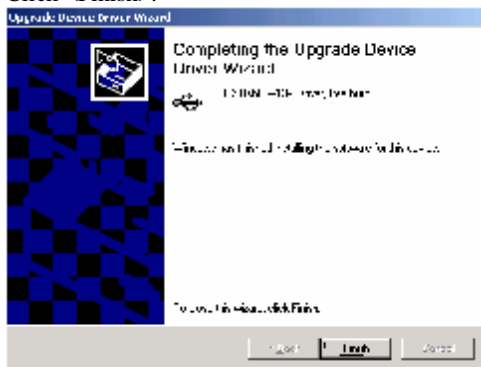
6. Click <Next>



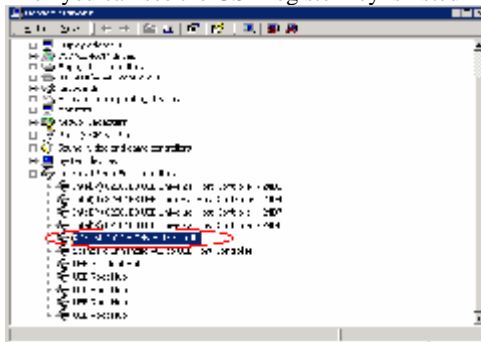
7. Click <Continue Anyway>



8. Click <Finish>.



9. Then you can see the USB register key is listed in Device Manager



10. Run Software Register again, it will check if the USB register key is ok.



3 Media Manager Guide

3.1 User Interface

- Songbook Window – manage all songs in songbook



- Edit Window – manually input song information in songbook
- Monitor Window – preview media files and songs
- Search Bar – help you search a song from songbook
- Artist Window – manage artist images

- Library Tool Window – compare songbook and libraries, transfer media file from songbook and libraries.



3.2 Collect and Set up Songs by Yourself

If you want to collect and set up songs by yourself, please follow below steps

1. Purchase karaoke disc from video shop or download media files from internet.
2. Add media files to songbook.
3. Input song information.
4. Enjoy them with Karaoke Jukebox.

3.2.1 Purchase Karaoke Disc from Video Shop or Download Media Files from Internet

You can purchase VCD, DVD, CDG, CD and LD (need extra device to convert) discs or download media files from internet. Unify Karaoke Jukebox will support most video files and audio files, as long as they are supported by Microsoft Media Player.

Video file in MPEG1, MPEG2, and MPEG4 format is your best choice.

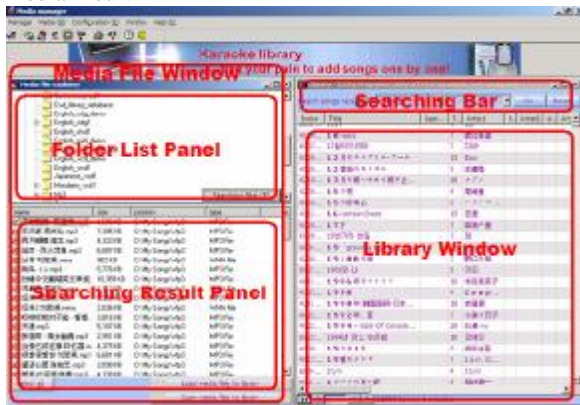
If you want to switch vocal/music while karaoke, the media file should contain multiple channels (MPEG1, MPEG4) or tracks (MPEG2). Music is stored in one channel (track) and vocal is stored in another channel (track).

3.2.2 Add Media Files to Songbook

3.2.2.1 Add Media Files from Hard Disk to Songbook

If you have many media files stored in your hard disk, it is very easy to add them to your songbook

1. Click Media Manager -> Menu -> Songbook -> Add songs -> Add songs from my computer to show Media File Window
2. The up side of the window is Folder List Panel. Double click folder icon to expand the folder.
3. Click <Setup searching filter> to set up Searching Filter.
4. Click <Search media file> to start searching under the folder.
5. All media files according to Searching Filter will be listed in Result List Panel.
6. Double click a media file to test (listen or preview) it on Monitor Window.
7. If you are satisfied with the media file, select them and click <Add selected media files>.



3.2.2.2 Add Media Files from VCD Disc to Songbook

Only VCD 2.0 disc can be added to songbook directly.

1. Exit Karaoke Jukebox first
2. Insert a VCD 2.0 disc into CD-ROM.
3. Click Media Manager -> Menu -> Songbook -> Add songs -> Add songs from my computer to show Media File Window.
4. Click CD-ROM icon in Folder List Panel.
5. Select <Vcd> in popup dialog window, then click <Next>
6. All media files in the disc will be listed.
8. Double click a media file to test (listen or preview) it on Monitor Window.
7. If you are satisfied with the media file, select them and click <Add selected media files>.

3.2.2.3 Add Media Files from DVD Disc to Songbook

3.2.2.3.1 Hardware Requirement

DVD-ROM

3.2.2.3.2 Install DVD Tool

You need to install DVD tool to copy media files from DVD disc to your hard disk first. The DVD tool is included in setup disc or can be downloaded from our website.

3.2.2.3.3 Copy Media Files from DVD Disc

1. Exit Karaoke Jukebox first
2. Install DVD tool on your computer.
3. Start <DVD copy> program.
4. Insert DVD disc into your DVD-ROM
5. Select <Disk modal> as <OPEN MODAL>, select <DVD Copy> as <OPERATION MODAL>, select the chapter you need to copy.
6. Input directory name and make sure your hard disk has enough space.
7. Click <Save> to start copy.
8. The DVD chapter will be saved as media file (*.mpg file) in hard disk.



3.2.2.3.4 Add Media Files to Songbook

All media files are stored in hard disk. You need add the media files to songbook.

3.2.2.4 Add Media Files from CDG Disc to Songbook

3.2.2.4.1 Hardware Requirement

CDG compatible CD-ROM

Only a few CD-ROM can read data from CDG disc. Here is a short list of compatible CD-ROM, you also can order compatible CD-ROM on our website.

Manufacturer	Model (Write/ReWrite/Read)	Type	Interface	Mode

	speed)			
HP	8210e (4/4/6)	CD-RW	USB	HP
Plextor	8Plex	CD-ROM	SCSI	Plextor
Plextor	PX-W1210TA (12/10/32)	CD-RW	IDE	MMC
Plextor	PX-S88TU (8/8/24U)	CD-RW	USB	MMC
Sony	CDU611	CD-ROM	IDE	MMC
Sony	CDU511	CD-ROM	IDE	MMC
Sony	DDU220E	DVD	IDE	MMC
Sony	CRX110e (4/2/24)	CD-RW	IDE	MMC
Sony	CRX160e (12/8/32)	CD-RW	IDE	MMC
Sony	CRX700E	CD/DVD- RW	IDE	MMC
Yamaha	CRW-4260 (4/2/6)	CD-RW	SCSI	Yamaha
Yamaha	CRW-4416 (4/4/16)	CD-RW	SCSI	Yamaha
Yamaha	CRW-2100 (16/10/40)	CD-RW	IDE	Yamaha
Yamaha	CRW-2200 (20/10/40)	CD-RW	IDE	Yamaha

3.2.2.4.2 Install CDG Tool

You need to install CDG tool to copy songs from CDG disc to your hard disk. The CDG tool (shareware version) is included in setup disc or can be downloaded from our website.

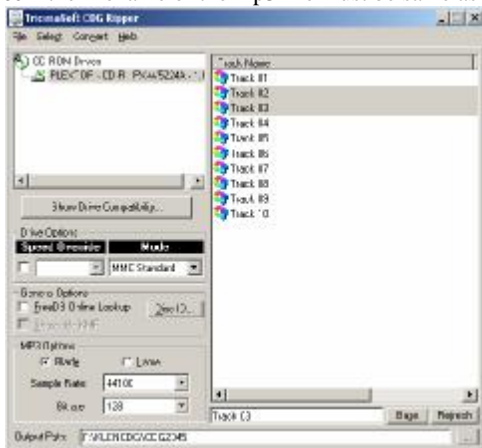
Minimum requirement to install CDG tool

- Windows 98/SE/ME/2000/XP
- Pentium MMX 233MHz+
- Minimum 16MB RAM
- Accelerated Video Card (w/ Fast 2D)
- 16-bit Sound Card
- Windows Media Player 6.4+
- DirectX 7+
- CD+G compatible CD-ROM/DVD-ROM
- MP3 Encoder DLL (Lame or Blade)
- ASPI Driver (wnaspi32.dll) is needed for Windows 2000/XP. You can find it in set up directory of CDG tools. Just place it in the C:\WINDOWS\SYSTEM\, C:\WINDOWS\SYSTEM32\ and CDG Ripper folders.

3.2.2.4.3 Copy Media Files form CDG Disc

1. Exit Karaoke Jukebox first
2. Start <CDG Ripper>
3. Insert CDG disc into your CD-ROM
4. Input <Output Path>, make sure your hard disk has enough space.
5. Select Menu -> Convert -> Extract to MP3+G to start copy.
6. Every song will be saved in 2 media files (*.mp3 + *.cdg) in hard disk.
7. You can try to play *.mp3 file with Karaoke Jukebox, the graph will be shown on the Video Window.

Notice – the filename of the mp3 file must be same as the cdg file.



3.2.2.4.4 Add Media Files to Songbook

All media files (*.mp3 + *.cdg) are stored in hard disk. You need add media files (*.mp3 file) to songbook.

3.2.2.5 Add Media Files from CD Disc to Songbook

3.2.2.5.1 Copy Media Files from CD Disc

Start up <Microsoft Media Player 9> or above version.

1. Insert CD disc into your CD-ROM
2. Click Menu -> Copy -> Copy from Audio CD
3. Click <Copy Music> button at top

3.2.2.5.2 Add Media Files to Songbook

All media files (*.wma file) are stored in hard disk. You need add the media files to songbook.

3.2.2.6 Add Media Files from LD Disc to Songbook

3.2.2.6.1 Hardware Requirement

- LD player machine
- Capture card

3.2.2.6.2 Get Media Files from LD Disc

1. Install capture card on your computer.
2. Link audio output port of LD player to audio input port of the capture card.
3. Link video output port of LD player to video input port of the capture card.
4. Insert LD disc to the player and start to play.
5. Capture audio and video with capture card and save them on hard disk in MPEG format.
6. For more information, refer to user guide of the capture card.

3.2.2.6.3 Add Media Files to Songbook

All media files (MPEG files) are stored in hard disk. You need add media files to songbook.

3.2.3 Input Song Information Manually

3.2.3.1 Show Edit Window

You can input song information in Edit Window. Edit Window is invisible by default.

To display Edit Window, please click Media Manager -> Menu -> Songbook -> Edit songs -> Input song information manually.

3.2.3.2 Preview a Song

You might need to preview a song before inputting its information. Double click the song in Songbook Window or click Media Manager -> Songbook -> Play songs -> Preview on monitor to preview a song.

You can switch channel (track) and set up audio gain at Monitor Window.

3.2.3.3 Input Song Information

1. Select target song in Songbook Window.
2. Input information in Edit Window.
3. Click <Save> to save it.




Notice: if you need to edit multiple songs at same time, you can select more than one song in Songbook Window, use <shift> or <control> key to do a multiple selection.

3.2.3.4 Set Up Artist Image

Jukebox will display artist image while you order song by artist after you have set up artist image in Media Manager.

Click Media Manager -> Menu -> Window -> Artist image to display Artist Window.

Artist list is on left side of Artist Window while artist image is on right side of Artist Window.

There are 3 buttons at bottom of artist image. Click <  > will point a picture file as artist image. Click <  > will save the picture as artist image. Click <  > will delete current artist image.

3.2.4 Batch Update Song Information

It will spend lots of time to input and edit song information one by one while you have thousands of songs. In fact, Media Manager can input most of song information automatically.

3.2.4.1 Index Selected Songs

1. Select target songs.
2. Click Media Manager -> Menu -> Songbook -> Edit songs -> Index selected songs.
3. Select index mode on popup dialog window, then click <Next>
4. Input value of <n> if it is necessary
5. The program will index selected songs automatically

Notice: Song index should be unique in songbook unless it is empty or zero. You can set up Minimum Index and Maximum Index at options window to decide the range of song index.

If the integer to be assigned is not in index range or it was assigned to another song already, then the song will not be indexed.

3.2.4.2 Change Case for Selected Songs

This function will unify letter case of songbook and make songbook neater.

1. Select target songs
2. Click Media Manager -> Menu -> Songbook -> Edit songs -> Change case for selected songs
3. Select field which to be updated and click <Next>
4. Select case mode and click <Next>

3.2.4.3 Convert Chinese for Selected Songs

This function is only for Chinese songs.

There are two kinds of Chinese in the world – Simplified Chinese and Traditional Chinese. Simplified Chinese is widely used in PRC and Singapore while Traditional Chinese is widely used in Hong Kong and Taiwan.

In Media Manager, you can convert one kind of Chinese to another very quickly.

1. Select target songs
2. Click Media Manager -> Menu -> Songbook -> Edit songs -> Convert Chinese for selected songs
3. Select direction of conversion, and then click <Next>.
4. All Chinese word in title, artist1, artist2 and artist3 column will be converted.

3.2.4.4 Count Total Chars for Selected Songs

This function will calculate char number of song title automatically.

1. Select target songs

2. Click Media Manager -> Menu -> Songbook -> Edit songs -> Count total chars for selected songs.
3. Decide if count space as a char, then click <Next>

3.2.4.5 Set Searching Letters for Selected Songs

This function will set searching letters for titles and artists automatically.

The function works well for English, most Europe language, simplified Chinese, traditional Chinese, Japanese, Korean, Vietnamese and Thai.

1. Select target songs, suggest you only select songs in one language at one time.
2. Click Media Manager -> Menu -> Songbook -> Edit songs -> Set searching letters for selected songs.
3. Select mode for adding searching letter, then click <Next>
4. Select suitable language according to selected songs, then click <Next>

3.2.4.6 Rename Media File for Selected Songs

You can rename media file as song index, song title or song title + song artist.

1. Select target songs.
2. Click Media Manager -> Menu -> Songbook -> Edit songs -> Rename media file for selected songs.
3. Select rename mode, then lick <Next>

Notice: be care of <title> mode, if there are two songs in songbook have the same title, rename will be failed.

3.2.4.7 Replace String for Selected Songs

This function will find and replace strings in songbook.

For example, update media file column from <\path1\...> to <\path2\...>.

1. Select target songs.
2. Click Media Manager -> Menu -> Songbook -> Edit songs -> Replace string for selected songs.
3. Selected a column to be updated (media file)
4. Input searching string (\path1\) and replacement string (\path2\), then click <Next>

3.2.5 Check Media File

The position of media file is recorded at <library> field and <media file> field. If the media file could not be found at that position, the song is unavailable. This function will find all unavailable songs.

1. Click Media Manager -> Menu -> Songbook -> Check songs -> Check media file
2. All songs in songbook will be checked one by one. Unavailable songs will be marked as <media file missed>
3. You can sort all songs by remark field and delete unavailable songs lately.

3.2.6 Check Duplicate Songs in one Songbook

1. Click Media Manager -> Menu -> Songbook -> Show duplicate songs

2. All songs with same title will be grouped, you can find duplicate songs easily.



3.2.7 Delete songs from Songbook

This function will delete selected song information in songbook, but media files are still remained on hard disk

1. Select target songs.
2. Click Media Manager -> Menu -> Songbook -> Delete songs -> Delete songs from songbook.

3.2.8 Delete songs from Songbook and harddisk

This function will delete selected song information in songbook, relative media files are be deleted from hard disk too.

1. Select target songs.
2. Click Media Manager -> Menu -> Songbook -> Delete songs -> Delete songs from songbook and harddisk.

3.2.9 Delete All Songs of a Library from Songbook

1. Click Media Manager -> Menu -> Songbook -> Delete songs -> Delete all songs of a library from songbook
2. Input root path of the library
3. All songs under selected root path will be deleted from songbook.

3.3 Set up Songs from Purchased Karaoke Library

3.3.1 Install Karaoke Library on Your Computer

After you get karaoke library (hard disk), the first step is installing it on your computer. You can connect the hard disk with IDE port on main board. Some main boards do not support big hard disk over 137 GB, you can connect the hard disk with IDE card. Please refer to user guide of IDE card for more details. You also can install the hard disk with an external USB hard disk box. Both IDE card

and external USB hard disk box are available on our website.



After the new hard disk is installed properly, it can be accessed from windows explorer.

3.3.2 Add Songs from Library

1. Click Media Manager -> Menu -> Songbook -> Add songs -> Add songs from a library.
2. You can select library by yourself or search available libraries. Library is stored under the subfolder of hard disk root path.

3.3.3 Add Songs from old Songbook

1. You need add all your songs from old songbook after new version is installed
2. Go to Media Manager -> Songbook -> Add songs -> Add songs from old songbook;
3. Select your old songbook database, you can find it at <Installation Path>\KtvPublic\ktvXXX.mdb or songXXX.mdb (XXX is version number);
4. Load all songs from old songbook database to new songbook.

3.4 Backup Songbook

You can backup opened songbook at any time to avoid data losing.

1. Click Media Manager -> Menu -> Songbook -> Backup songbook.
2. Give a name of the backup.
3. All song information and artist images will be backup.

3.5 Restore Songbook

You can restore opened songbook from previous backup at any time.

All existing data in opened songbook will be deleted before the restoration

1. Click Media Manager -> Menu -> Songbook -> Restore songbook.
2. Select a previous backup from the list. Click <Next>
3. All song information and artist images will be restored.

3.6 Export Songs from Songbook to a Library

1. Click Media Manager -> Menu -> Library -> Export songs from songbook to a library.
2. Select a existing library or create a new library to export
3. Library tool window will be displayed. Songbook is listed on left side well the library is listed on right side.
4. Select songs you want to export from songbook side.



5. Click “Transfer ->” button
6. Check <Incl. Media files> if you want to transfer media files to the root path of the library as well.
7. Check <Delete after transfer> if you want to delete songs from songbook after they are transferred to the library.

3.7 Compare Songbook and Library

This will compare and check out duplicate songs between songbook and a library for you.

1. Click Media Manager -> Menu -> Library -> Compare songbook and library.
2. Songbook is opened on left side, select your target library and open it on right side.
3. Choose comparison options
4. Click <Compare A with B> button to compare songbook with library first. If there is a song in songbook can be found in library, it will be marked as <duplicate song> in songbook.

5. Or you can click <Compare B with A> button to compare library with songbook. If there is a song in library can be found in songbook, it will be marked as <duplicate song> in library.
6. After comparison, you can check remark field of the songs. You can sort songs by remark field and delete duplicate songs easily.

3.8 Compare 2 Libraries

This will compare and check out duplicate songs between two libraries for you.

1. Click Media Manager -> Menu -> Library -> Compare 2 libraries.
2. Select two target libraries and open them one by one. Library A is opened on left side well Library B is opened on right side.
3. Choose comparison options
4. Click <Compare A with B> button to compare Library A with Library B first. If there is a song in Library A can be found in Library B, it will be marked as <duplicate song> in Library A.
5. Or you can click <Compare B with A> button to compare Library B with Library A. If there is a song in Library B can be found in Library A, it will be marked as <duplicate song> in Library B.
6. After comparison, you can check remark field of the songs. You can sort songs by remark field and delete duplicate songs easily.

3.9 Transfer Songs between Songbook and Library

1. Click Media Manager -> Menu -> Library -> Transfer songs between songbook and library.
2. Songbook is opened on left side, select your target library and open it on right side.
3. Select the songs form left side or right side.
4. Choose transfer options. You can transfer song information only or both song information and media file.
5. Click <Transfer> button. You can transfer media files from left side to right side, or you can transfer from right side to left side.

3.10 Transfer Songs between 2 Libraries

1. Click Media Manager -> Menu -> Library -> Transfer songs between 2 libraries.
2. Select two target libraries and open them one by one. Library A is opened on left side well Library B is opened on right side.
3. Select the songs form left side or right side.
4. Choose transfer options. You can transfer song information only or both song information and media file.

5. Click <Transfer> button. You can transfer media files from left side to right side, or you can transfer from right side to left side.

3.11 Force Upgrade Library

You can upgrade a library from old version to current version.

1. Click Media Manager -> Menu -> Library -> Force upgrade library.
2. Select a library to upgrade.

3.12 Enjoy Your Songs

Media Manager is a tool not only to manage songs, but also to play songs. You can play songs or media files with Media Manager conveniently.

3.12.1 Play Songs with Media Manager

Double click a song in Songbook Window or click Media Manager -> Menu -> Songbook -> Preview on monitor

3.12.2 Play Media Files with Media Manager

1. Click Media Manager -> Menu -> Songbook -> Add media file to songbook to show Media File Window
2. The up side of the window is Folder List Panel. Click <+> in front of the folder icon to expand the folder. Click folder icon to start searching under the folder.
3. Click <Searching Filter> to set up Searching Filter.
4. Add media file according with Searching Filter will be listed in Result List Panel.
5. Double click a media file to test (listen or preview) it on Monitor Window.

3.12.3 More Playing Options

You can right click Monitor Window and set up window size at popup menu.

You can set up <Auto repeat>, <Auto play next song>, <Auto play randomly>, <Only play first 10 seconds> mode.

3.12.4 Send Songs to Karaoke Jukebox

1. Right click a song in songbook.
2. Click <Add to jukebox> or <Insert to jukebox> from popup menu.

3.12.5 Send Media File to karaoke Jukebox

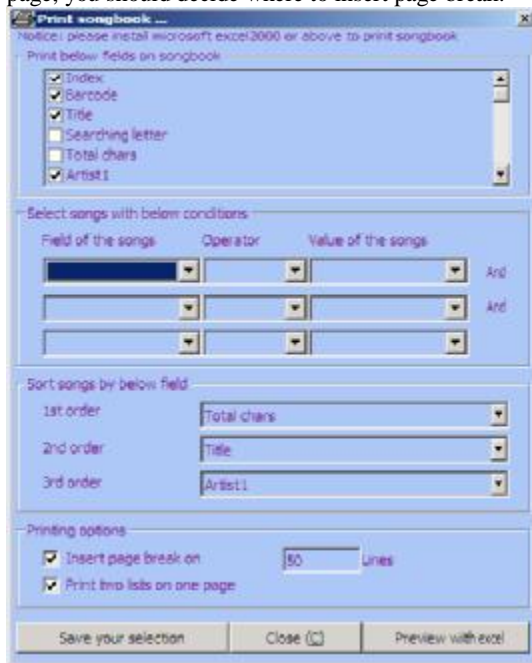
1. Right click a media file in Result List Panel of Media File Window.
2. Click <Add to jukebox> or <Insert to jukebox> from popup menu.

3.13 Print Out Songbook

Make sure you have installed Microsoft excel 2000 or above (it is included in Microsoft office 2000 or XP)

Click Media Manager -> Menu -> Songbook -> Print songbook

From the dialog window, select song fields to be printed, select which songs to be printed and select sort fields. If you want to print two lists of songs in one page, you should decide where to insert page break.



3.14 Setup Media Manager

3.14.1 Setup Media File Searching Filter

- This will decide how to search media files by Media Manager.

- Click Media Manager -> Menu -> Configuration -> Setup media file searching filter.



3.14.2 Setup Drivers Searching Router

1. If you moved a hard disk to another computer, the driver letter may be changed. For example D:\ changes to E:\, how to find the songs without updating songbook manually? The answer is to set up driver searching route here!
2. For most situations, you can set driver searching route as D:\ E:\ F:\ G:\ ..., if the song can not be found at original driver, Karaoke Jukebox will try to find the song at D:\ E:\ F:\ G:\ ... driver in sequence.
3. The searching route is only set for Karaoke Jukebox and will not affect Media Manager.
4. Set up too many drivers in searching route will slow down the response speed of Jukebox.

5. Click Media Manager -> Menu -> Configuration -> Setup Drivers Searching Router.



3.14.3 Setup Index Range of Songs

- Click Media Manager -> Menu -> Configuration -> Index range
- You can set up Minimum Index and Maximum Index of songs. System will check index range for you. You only can index songs inside the range.

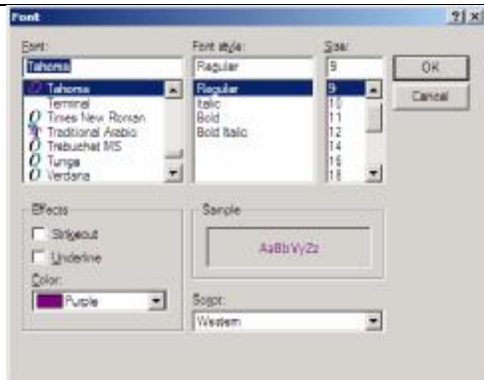


3.14.4 Setup Font

This will set up font for application interface. If non-English characters are displayed as question marks, you need change to another font to support the characters.

- Click Media Manager -> Menu -> Configuration -> Font

UNIFY KARAOKE SOFTWARE USER GUIDE



4 Karaoke Jukebox Guide

4.1 User Interface

There are 5 main windows in Karaoke Jukebox. They are Player Window, Video Window, Menu Window, Options Window and My Computer Window.

- Player Window – You can control the playing by it. Right click the window, you will get main menu.



- Video Window – It will show the videos. You can place this window on TV screen.



- Menu Window – You can order songs and do almost everything by it. Place this window on VAG monitor or touch screen.



- Control bar - control bar will be shown on menu window while you need it. It can be operated by mouse or touch screen very easily.
- Options Window – Setup Karaoke Jukebox with it.



4.2.4 Play VCD/DVD Disc

1. Insert VCD/DVD disc into your CD-ROM
2. Click Jukebox -> Menu -> Media file -> Search in CD-ROM -> <CD-ROM letter>
3. Or click Jukebox -> Menu Window -> Media file -> Search in CD-ROM -> <CD-ROM letter>

4.2.5 Search and Play Media Files in My Computer Window

1. Click Jukebox -> Media file -> Search in my computer to show My Computer Window.
2. The left side of the window is Folder list panel. Click <+> in front of the folder icon to expand the folder. Click folder icon to start searching under the folder.
3. Click <Searching filter> to set up Searching Filter.
4. All media files according to <Searching Filter> will be listed in Result List Panel.
5. Double click a media file to play it in Karaoke Jukebox.
6. Click <Auto play next program> or <Auto play randomly> to play all media files in Result List Panel.

4.2.6 Play Media File from Media Manager

1. Select a song in songbook or right click a media file in Result List Panel of Media File Window.
2. Click Media Manager -> Menu -> Songbook -> <Add to jukebox> or <Insert to jukebox>.

4.3 Order Songs

4.3.1 Order Songs by Index

1. Look up the song in printed songbook.
2. Select Jukebox -> Menu window -> Index
3. Input the index of the song with keyboard/mouse/PC remote
4. Select <Ok> to add the song to the end of the playlist
5. Select <Insert> to insert the song to the beginning of the playlist.



Notice – You should setup index of songs in Media Manager before you can order songs by index.

4.3.2 Order Songs by Title

1. Select Jukebox -> Menu window -> Title to list all titles in songbook.
2. Navigate by <Page up/Page down>
3. There should be a digital in front of every song
4. Key in the digital to add the song
5. Or highlight the song by press <Up/Down>. Then press <Enter/Ok/Menu> to add the song.
6. You can use <Alphabet> to search title quickly.



4.3.3 Order Songs by Artist

1. Select Jukebox -> Menu window -> Artist to list all artist regions.
2. Select a region to list all artists that come from this region.



3. Select a category to list all artists in this category.



4. Select an artist to list all songs performed by this artist.



5. Select a song to add it to the playlist.
6. You can use <Alphabet> to search artist quickly



7. If you do not want to show artist image, you can set <Hide artist image> in Option Window

4.3.4 Order Songs by Language

1. Select Jukebox -> Menu window -> Language to list all available languages.
2. Select a language to list all songs in this language.
3. Select a song to add it to the playlist.

4. You can use <Alphabet> to search title quickly.



Notice: you should setup language of songs in Media Manager before you can order songs by language.

4.3.5 Order Songs by Category

1. Select Jukebox -> Menu window -> Category to list all categories of songs.
2. Select a category to list all songs in this category.
3. Select a song to add it to the playlist.
4. You can use <Alphabet> to search title quickly.



Notice – You should setup category of songs in Media Manager before you can order songs by category.

4.3.6 Order Songs by Char Number

1. Select Jukebox -> Menu window -> Char number to list all available char numbers.



2. Select a number to list all songs with this char number.



3. Select a song to add it to the playlist.
 4. You can use <Alphabet> to search title quickly.
- Notice** – You should setup char number of songs in Media Manager before you can order songs by char number.

4.3.7 Order Songs by Popularity

1. Select Jukebox -> Menu window -> Popularity to list all available languages of songs.

2. Select a language to list the songs in this language.
3. The songs are sorted by popularity.
4. Select a song to add it to the playlist.
5. You can use <Alphabet> to search title quickly.



Notice – You should setup popularity of songs in Media Manager before you can order songs by popularity.

4.3.8 Order Songs by Alphabet

- Firstly, setup searching letter for songs and artists in Media Manager.
- Then you can use alphabet to find a song form thousands of songs quickly.



- You also can use it to find an artist form a very long artist list.

- You can use digital number, alphabet, Greek, Russian ... as search letter. Just press <F2: Switch> to switch IME (input method editor)
- You can add new IME in Media Manager -> Configuration -> IME definition



4.4 Control Playing

4.4.1 Previous Program

- If current program is played more than 5 seconds, then go to the beginning of the program. Otherwise stop current program and go to previous program (if there is previous program in playlist).

4.4.2 Next Program

- Stop current program and go to next program if there is next program in playlist.

4.4.3 Fast Backward/Fast Forward

- Adjust progress of current program. Press the button to start backward/forward. Release the button to stop backward/forward and start to play again.

4.4.4 Play/Pause

- Play or pause current program

4.4.5 Stop

- Stop current program

4.4.6 Eject

- Open/close the door of CD-ROM

4.4.7 Step Backward/Step Forward

- Pause current playing and go to previous/next second of the program.

4.4.8 Speed

- Change playing speed to -10X, -5X, -1X, 0X (pause), 1/2X, 1X (play), 2X, 5X, 10X of normal speed.

4.4.9 Repeat All

- Jump to first program after all programs are finished in playlist. Play all programs in playlist again and again.

4.4.10 Repeat One

- Jump to beginning and play current program again while it is finished. Repeat current program again and again.

4.4.11 Only Play First 10 Seconds

- Only play first 10 seconds for every program. You can preview all programs in playlist quickly with this function.

4.4.12 Play Randomly

- Randomly select a program in playlist and play it.

4.4.13 Time Searching

- Jump to appointed position of current program quickly. Click Jukebox -> Menu -> Control -> Time searching. Osd window will prompt you to input target time in <h:mm:ss> format.
- Notice: you do not need to input <:> at all, just input 5 digitals.

4.4.14 Loop Playing

- Set start point and end point on current program to repeat current program from start point to end point again and again.
- While current program is playing, click Jukebox -> Menu -> Control -> Loop playing will set current position as start point.
- After a while, click Jukebox -> Menu -> Control -> Loop playing again to set current position as end point.
- Jukebox will play current program from start point to end point again and again.
- Click Jukebox -> Menu -> Control -> Loop playing again to go back to normal playing.
- This function is useful while you are practising new songs.

4.4.15 Show Prefix Screen before Every Program

- Program title, artist and other information can be displayed on Video Window before starting every program. This is prefix screen.
- Prefix screen will be displayed for about 10 seconds. Click <Play> to skip.
- Check Jukebox -> Menu -> Control -> Show prefix screen before every program.
- Click Jukebox -> Options Window -> General -> Display time for prefix screen to set display time.

4.4.16 Hint for Next Program in 30 Seconds

- The title of next program can be shown in 30 seconds before current program finished. This tells you which program will be the next and hint the singer to prepare in advance.
- Check Jukebox -> Menu -> Control -> Hint for next program in 30 seconds.

4.5 Control Audio

4.5.1 Control Music Volume

- This will adjust wave volume of sound card.
- Click Jukebox -> Menu -> Audio -> Volume+/Volume-/Mute to adjust it.

4.5.2 Control Microphone Volume

- You can link your microphone to microphone-in port or line-in port (via mixer) or cd-in port (via mixer) of the sound card, therefore there are three volumes (microphone volume, line-in volume or cd-in volume) involved. You should set up correct port in advance so Karaoke Jukebox can adjust volume for the port.
- Click Jukebox -> Options Window -> Audio to select a correct port.
- Click Jukebox -> Menu -> Audio -> Microphone volume +/-microphone volume-/microphone mute to adjust volume of the port.

4.5.3 Control Key

- This will adjust key of the music.
- Click Jukebox -> Menu -> Audio -> Key up/Key down/Key reset to adjust it.
- After current program is finished, the key is reset automatically.

4.5.4 Track Selector

- If you are playing an MPEG2 file (DVD file), there is more than one track usually. You can select any track from track selector.
- Click Jukebox -> Menu -> Audio -> Track selector, and select the track you want.
- If there is only one track or the media file is not an MPEG2 file, the track selector will become grey and not available.
- Most dvd karaoke file have two tracks. Music is on one track while vocal is on another track. You can switch vocal on/off with track selector.

4.5.5 Channel Selector

- Most media files only have one track, but there are 2 channels in the track – left channel and right channel.
- Click Jukebox -> Menu -> Audio -> Channel selector -> Stereo/Left channel/Right channel/Mono to select the channel.
- Most karaoke files have two channels. Music is on one channel while vocal is on another track. You can switch vocal on/off with channel selector.

4.5.6 Music Channel Settings

- Most karaoke files have music at one channel (track) and original vocal at another channel (track) while others are reversed. You should setup music channel by yourself.

- Click Jukebox -> Menu -> Audio -> Music channel settings -> Music at left channel/music at right channel/music at right channel to set up it manually.
- If you are playing a song and the music channel of the song is set in Media Manager, check Jukebox -> Menu -> Audio -> Music channel setting -> according settings in media manager.

4.5.7 Vocal On/Off

- Disable/enable original vocal of karaoke songs
- Vocal off: switch current channel (track) to music channel according to <music channel settings>.
- Vocal on: switch current channel to vocal channel opposite to <music channel settings>.
- Click Jukebox -> Menu -> Audio -> Vocal off to set the vocal.
- Or press Jukebox -> Menu Window -> More functions -> Vocal to set the vocal.

4.6 Control Playlist

4.6.1 Jump to a Program in Playlist

1. Click Jukebox -> Menu -> Playlist, and select the target program from list.
2. Or press number of the target program directly.
3. Or select from Jukebox -> Menu window -> Playlist

4.6.2 Give Priority to a Program

1. Select from Jukebox -> Menu window -> Playlist -> Priority
2. Input number of the target program.
3. The program will be moved to the top of the playlist. It will be played at next while a previous program is playing currently.



4.6.3 Delete a Program from Playlist

1. Select from Jukebox -> Menu window -> Playlist -> Delete
2. Input number of the target program.
3. The program will be deleted from the playlist. If the program is playing currently, next program will be played instead.



4.6.4 Clear Playlist

1. Select from Jukebox -> Menu window -> Playlist -> Clear
2. All programs in playlist will be deleted. If a program is playing currently, the playing will be stopped.

4.6.5 Auto Delete Played Program from Playlist

- Use this function if you do not want to keep a program in playlist after it is played.
- Click Jukebox -> Menu -> Playlist -> Auto delete played program from playlist.

4.6.6 Auto Clear Playlist while Exit

- Use this function if you do not want to keep any program in playlist after you exit Jukebox.
- Click Jukebox -> Menu -> Playlist -> Auto clear playlist while exit.

4.7 Theme

- Theme is scheme for window background, font size, font colour and etc... There are several build-in themes for Jukebox. You can select it by yourself.



4.7.1 Change Theme

- Click Jukebox -> Menu -> Theme -> Default/Previous/Next
- Or click Jukebox -> Option window -> Theme icon, and select theme from Current theme dropdown box.



4.7.2 Create New Theme

- Click Jukebox -> Option window -> Theme icon -> Create new theme

4.8 Single Screen vs. Dual Screen

4.8.1 Working with Single Screen

- Set Karaoke Jukebox to single screen mode if you only have one video device (monitor or TV).
- Video and the menu will be displayed in one window. Video size will be reduced while you are using menu, if you do not operate menu for 10 seconds, the video will be maximized. You also can maximize the video by clicking it.

- Uncheck Jukebox -> Menu -> Interface -> Dual screen mode will set Karaoke Jukebox to single screen mode.



4.8.2 Working with Dual Screen

- Set Karaoke Jukebox to dual screen mode if you have two video devices. In most condition, one video device is VGA monitor to order songs. The other video device is big TV or projector to show video.

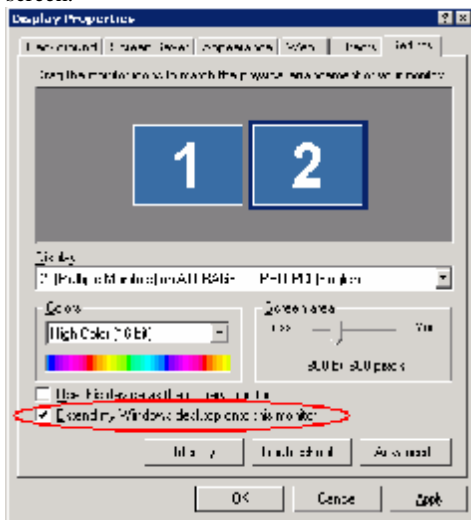


4.8.2.1 Install 2nd Video Device

Windows2000/XP is recommended to install 2nd video device.

1. Purchase 2nd VGA card with TVOUT port. (You can order it on our website.)

2. Install 2nd VGA card on your pc.
3. Install driver of 2nd VGA card.
4. Enable 2nd screen in OS. Click Windows -> Start -> Settings -> Control panel. Then double click Display icon. From there you can enable 2nd screen.

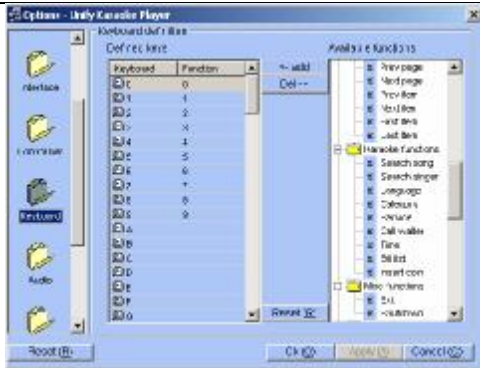


4.8.2.2 Enable Dual Screen in Jukebox

- Check Jukebox -> Menu -> Interface -> Dual screen mode will set Karaoke Jukebox to dual screen mode.

4.9 Define Keyboard

- You can assign listed function to a listed keyboard shortcut.
- Click Jukebox -> Options Window -> Keyboard icon, select a keyboard shortcut from left side, select a function from right side, then click <Add> to assign. Click to delete current assignment.



4.10 Exit System, Restart and Power off Computer

- You can exit system, restart and power off your pc with Karaoke Jukebox. The Jukebox can be controlled by IR remote or by touch screen. This function gives you ability to turn off your pc without mouse or keyboard installed.
- Press Jukebox -> Menu Window -> More functions -> Exit system/Restart/Power off

4.11 Control Karaoke Jukebox from Menu Window

- Menu Window provides a large and clear menu for you to operate the Jukebox. Karaoke Jukebox can be controlled by IR Remote or barcode scanner or touch screen while most of other media players should be controlled by mouse or keyboard. You can enjoy the music on the bed. Controlling Karaoke Jukebox is as easy as controlling a TV.
- You can order songs, play media files, control playlist, change theme, set preferred language exit system, restart, and power off from Menu Window.

5 Multiple Languages

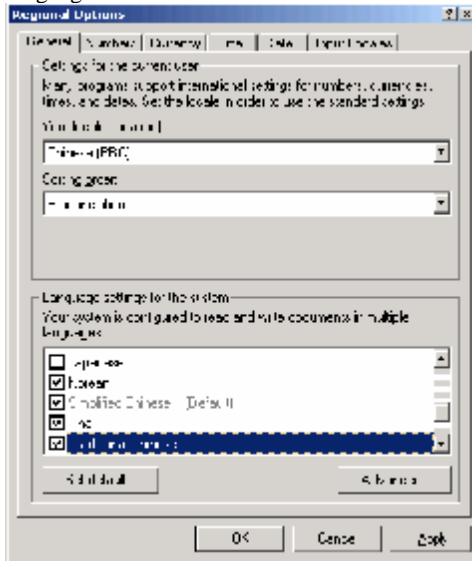
5.1 Knowledge Base about Language and OS

Windows 2000/XP is required to support multiple languages.

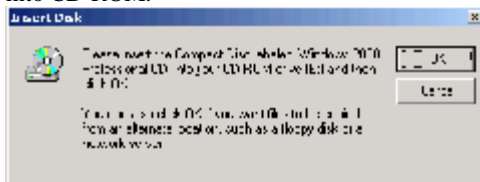
5.1.1 Enable a Language in OS

5.1.1.1 Enable a Language in Windows2000

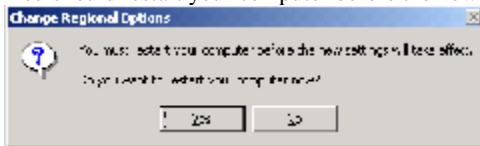
- Click Windows -> Start -> Settings -> Control Panel -> Regional Options -> General. From <Language settings for the system> list, check on the language.



- After click <OK> or <Apply>, you need to insert windows2000 setup CD into CD-ROM.



- You should restart your computer before the new settings take effect.



5.1.1.2 Enable a Language in WindowsXP

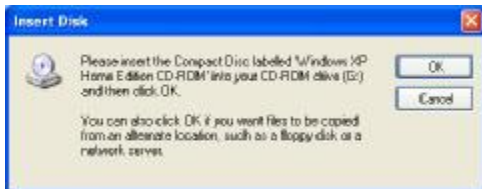
- Click Windows -> Start -> Control Panel -> Regional and Language Options -> Languages



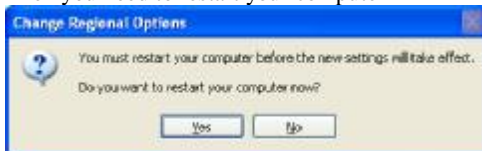
- From <Supplemental language support> check on <Install files for complex script and right-to-left languages (including Thai)> and <Install files for East Asian languages>



- After click <OK>, you need to insert <WindowsXP setup CD> into your CD-ROM.



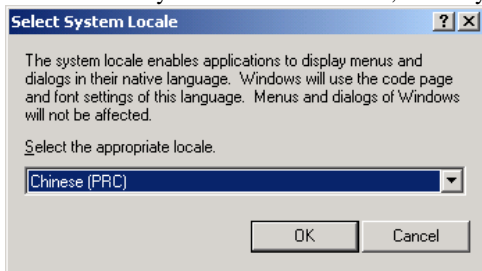
- Then you need to restart your computer



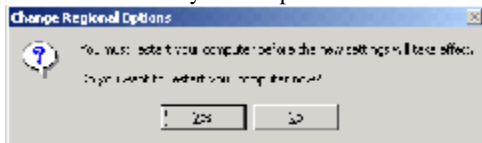
5.1.2 Set a Language as Default Language in OS

5.1.2.1 Set a Language as Default Language in Windows2000

- Please enable the language in windows2000 first. Then click Windows -> Start -> Settings -> Control Panel -> Regional Options -> General -> Set default...
- From <Select System Locale> windows, choose your language.

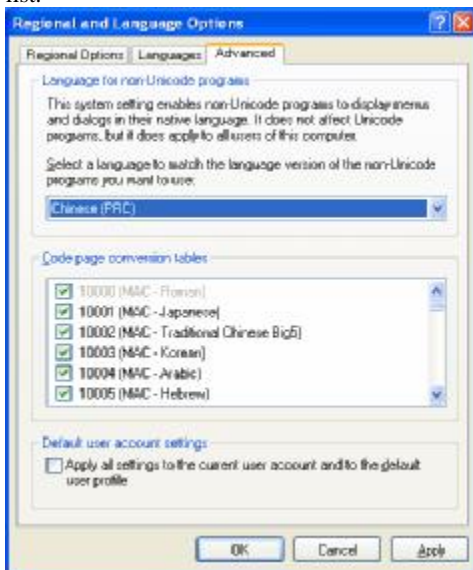


- Click <OK> on the windows, then click <OK> or <Apply> again.
- You should restart your computer before the new settings take effect.



5.1.2.2 Set a Language as Default Language in WindowsXP

- Click Windows -> Start -> Control Panel -> Regional and Language Options -> Advanced
- From <Language for non-Unicode programs>, select the language from the list.



- Click <OK> or <Apply>

5.2 Change Interface Language

Karaoke Jukebox is available in English, Simplified Chinese and Traditional Chinese currently.

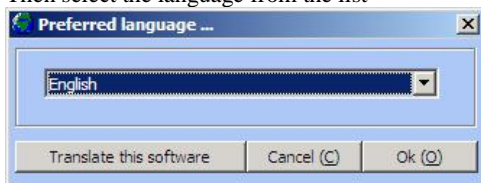
If you speak English, you can switch interface language to English.

If you speak Chinese and come from China or Singapore, you can switch interface language to Simplified Chinese. If you speak Chinese and come from HK or Taiwan, you can switch interface language to Traditional Chinese.

If you speak other language, you can translate user interface into your language very easily. Then switch interface language to your language.

1. Make sure you are using Windows2000, WindowsXP or above.
2. Make sure the language is enabled in OS. Otherwise you should enable the language in OS.

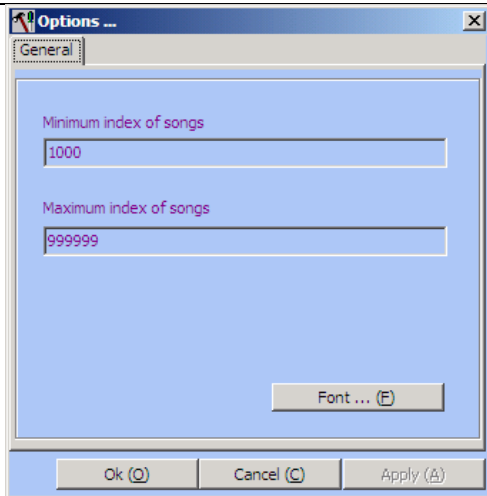
3. Click Media Manager -> Menu -> Configuration -> Preferred language.
Then select the language from the list
4. Or click Jukebox -> Option window -> Interface icon -> Preferred language.
Then select the language from the list



5. Or press Jukebox -> Menu window -> More functions -> Preferred language. Then select the language from the list.



6. Sometimes your language could not be displayed correctly in Karaoke Jukebox, this because the application font does not support your language. Click Media Manager > Menu -> Configuration -> Options -> Font ... to set up application font.



7. If you still see <????> in user interface, you should set your language as system default language in Windows2000/XP.

Notice: changing preferred language will affect all karaoke software (include Media Manager, Karaoke Jukebox, Karaoke Remote).

5.3 Translate the Software to Any Language

You can translate the software to any language very easily. Just translate a text file to the language

1. Click Media Manager -> Menu -> Configuration -> Preferred language -> Translate this software.
2. Or click Jukebox -> Option Window -> Interface icon -> Preferred language -> Translate this software.

5.4 Input Song Title and Artist Name in Any Language

1. Enable the language in Windows2000 or XP.
2. Install input method of the language in Windows2000 or XP.
3. Select a font to fit the language.
4. Then you can input song title and artist name in the language at Media Manager.

5.5 Open a Karaoke Lounge for International Customers Speaking Different Language

- Decide your target language.

- For example, if most of your customers come from US, China and Korea, then your target languages are English, Simplified Chinese and Korean.
- Translate the software into all target language.
- Your customers can switch interface language by themselves.
- Your customers can order songs by language.
- Your customers can select artist by region.

6 Advanced Equipments

6.1 Karaoke Remote

6.1.1 Hardware Installation

1. Make sure at least one COM port on your pc is available. It is at the back of your pc.
2. Link inferred receiver of Karaoke Remote to COM port of pc.
3. Insert two AAA size batteries into the remote controller.

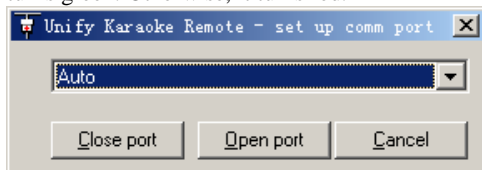
6.1.2 Driver Installation

1. The driver is installed with Karaoke Jukebox by default.
2. Click Windows -> Start -> Program files -> Unify Karaoke Jukebox -> Karaoke Remote to start up the driver.
3. After the driver starts up, a small green/red light is shown on windows system tray (at right-down corner of the desktop).



6.1.3 Set Up COM Port

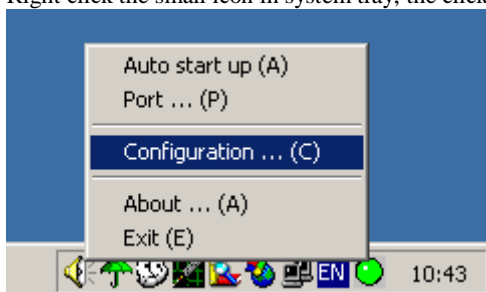
1. Right click the small icon in system tray, then click Port
2. Select the COM port which connects to the receiver. It is <Port1> for most computers. If it does not work, try <Port2>. You can select <Auto> if you do not know which one is the correct port.
3. Click <Open port>, if the port is available, the small icon in system tray turns green. Otherwise, it turns red.



6.1.4 Set Up Keypad of the Remote

1. Like common pc keyboard, Karaoke Remote will send key code repeatedly while you are holding a key. You can set up <Repeat delay> and <Repeat rate> in the driver.

2. Right click the small icon in system tray, the click Options



3. Adjust <Repeat delay> and <Repeat rate> in Options Window.



6.1.5 Use Karaoke Remote



<Waiter> – call a waiter (available in Club Edition)

<Mute> – enable/disable music output.

<F1>,<F2>,<F3>,<F4> – function key

<MENU> – display Menu Window

<↑> – go to previous song / item.

<↓> – go to next song / item.

<←> – fast backward / page up

<→> – fast forward / page down

<Ok> – Execute a command.

<Cancel> – hide Menu Window or stop the playing

<Key Shift +>/<Key Shift -> – adjust key of music.

<1>,<2> ...<9>,<0> – order songs by index number and select an item on Menu Window.

<Insert> – insert a song next to current song.

 – delete a song from play list.

<Play/Pause> – play/pause/resume song or execute menu.

<Stop> – stop playing

<Microphone +>/< Microphone -> – adjust microphone volume.

<Vocal> – Turn on/off the vocal.

<Music +>/<Music -> – adjust music volume.

6.2 Barcode Scanner

Barcode scanner provides more fast and convenience way to order a song with Unify Karaoke Jukebox.

You can order barcode scanner and barcode songbook from our website.

6.2.1 Hardware Installation

1. Pull out keyboard from keyboard port (PS/2 port) at the back of your pc.
2. Plug the barcode scanner into keyboard port.
3. If you want to use keyboard with barcode scanner at the same time, you can plug keyboard in another port of the barcode scanner
4. You do not need to install any driver for barcode scanner.

6.2.2 Use Barcode Scanner

1. Start up Karaoke Jukebox.
2. Look up songs from printed songbook.
3. Put scanner head upon the barcode of the song.
4. Press the button on the scanner.
5. The song should be added to the playlist of Karaoke Jukebox.

6.3 Touch Screen

Most people do not want to use mouse and keyboard any more while they are enjoying the music. Touch screen is the best solution for them. Karaoke Jukebox is optimised for touch screen. Anybody can order songs easily only with their fingers. Most functions can be controlled via touch screen.

The requirement of touch screen is different for karaoke using and for general using at home. Karaoke need a solid and wearable touch screen. Our touch screen is the latest product having such advantages - quick reaction, precise orientation, clear transparency and wearable speciality. You can order CRT or LCD touch screen at our website.

6.3.1 Hardware Installation

1. Firstly, touch screen is a standard VGA monitor, so plug its VGA line to VGA port of your pc.
2. There is an extra communicate USB line for touch screen. Link the USB line to a free USB port of your pc.

6.3.2 Driver Installation

1. Insert driver disc of the touch screen into CD-ROM.
2. Install driver of touch screen.
3. Restart windows after installation.
4. Calibrate the coordinate of the touch screen.
5. Please read user guide of touch screen for more details.

6.3.3 Use Touch Screen

Menu Window of Karaoke Jukebox is designed for touch screen. After maximize the Menu Window on touch screen, you can control it with your fingers.

6.4 Karaoke Mixer

Computer sound card and computer sound box only provide basic sound for karaoke. If you need a little more professional sound quality, karaoke mixer, professional amplifier and sound box are necessary.

Karaoke mixer connects more than one microphone while sound card only connects one microphone. You also can get professional echo effect and key

change effect with karaoke mixer. Although the software can change key for you, please use mixer to change key for professional sound quality.

6.4.1 Install Karaoke Mixer

1. Link two microphones to karaoke mixer.
2. Link <line out port> of mixer to <line in port> of computer sound card.
3. Link <line out port> of computer sound card to <line in port> of amplifier.
4. Click Jukebox -> Options Window -> Audio, and select <line-in port>.



7 Additional Features on Home Edition

Unify Karaoke Jukebox Home Edition provides below additional features besides all functions of Basic Edition. It is a better solution if you feel Basic Edition is not enough for you.

7.1 Add More Than 2000 Songs in Songbook

7.2 Add More Than 10 Songs in Playlist

7.3 Edit More Than 2000 Song Information Together

7.4 Search More Than 2000 Media Files on Hard Disk

7.5 Support Network Playing

7.6 Station Grade

- You can set station grade to 0, 1, 2 or 3 at Karaoke Jukebox.
- You can set song grade to 0, 1, 2 or 3 at Media Manager.
- Jukebox only searches and plays song, which has lower grade. For example, set jukebox grade to 0, the Jukebox will not play the song with grade greater than 0.
- Click Jukebox -> Menu Window -> More functions -> Admin setup -> Set station grade to set up station grade.

7.7 Can Be Activated By USB Register Key

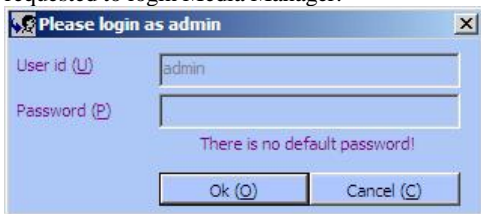
Home Edition can be activated by USB register key, so you can use the software at any pc you want.

7.8 Security Feature

- Home Edition provides user id and password to protect Media Manager and Jukebox. Nobody can change song information or access important features of Jukebox without your promise.
- There is only one user id in Home Edition - admin

7.8.1 Access Media Manager

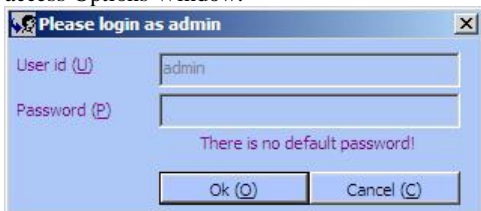
- Only Admin can login and use Media Manager. Admin password is requested to login Media Manager.



- There is no default password for your first time login, so just leave it blank and click <Ok> to login.

7.8.2 Access Options Window of Karaoke Jukebox

- Most important features are set up in Options Window. It is protected by password.
- Click Jukebox -> Menu -> Options, you should provide admin password to access Options Window.



- There is no default password for your first time login, so just leave it blank and click <Ok> to login.

7.8.3 Access Admin Page of Menu Window

- Most important features are set up in admin page of Menu window. The admin page is protected by password.
- Select Jukebox -> Menu Window -> More functions -> Admin setup, and input admin password.

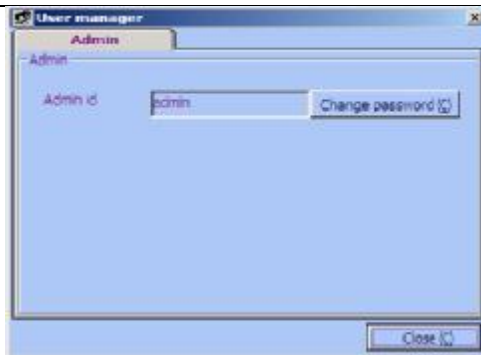


- There is no default password for your first time login, so just leave it blank and press <Ok> to login.
- After login as admin, you can exit system, restart or power off the computer.



7.8.4 Change user password

- Click Jukebox -> Options Window -> General -> Manage users -> Admin -> Change password to change admin password.



- Notice – if you need to login admin page of Menu Window with remote controller, please only use digital number for admin password since remote controller do not support alphabet input.

8 Additional Features on Business Edition

Unify Karaoke Jukebox Business Edition is a perfect solution if you want to start a small karaoke business with a little investment. It is very easy to build a karaoke auto-selling machine with Business Edition. You also can hire 1 or 2 waiters to look after the machine and serve the customers. You can put your karaoke machine to restaurant, bar, nightclub, shopping mall, street or other public place. Everyone can order and enjoy his favourite songs after purchase or insert coins into the machine.

8.1 Main features

- Integrated payment system
- Support coin selector, the hardware is available on our website.
- Recognize majority countries such as European coin, United States coin, English pound
- Customer should pay to waiter or insert coin to order songs
- Charge customers by number of songs or by consumed time
- You can set up price of a song, price of a minute or price of a coin
- Password protected cashbox will calculate and audit your daily income.
- Auto advertisement while idle
- All features of Home Edition
- Your customer neither can jump to other program in playlist nor can do pause/stop/fast backward/fast forward in a program. All programs in playlist will be played one by one in normal speed.

8.2 Set Payment System

- Click Jukebox -> Options Window -> Payment system.



8.2.1 Set Payment System Mode

- There are 3 modes for payment system.
- Disable – customers are free to sing
- Enable song credit – customers are charged by number of songs
- Enable time credit – customers are charged by consumed time (minutes)

8.2.2 Set Price of Song Credit

- Decide how much customers will pay for 1 song. Only useful if payment system mode = enable song credit.

8.2.3 Set Price of Time Credit

- Decide how much customers will pay for 1 minute. Only useful if payment system mode = enable time credit.

8.3 Set Coin Selector

8.3.1 Install Coin Selector

- If you do not want to hire anybody to look after your machine, you can install coin selector on the machine. The coin selector is available on our website.
- Please refer to User Guide of Coin Selector.

8.3.2 Enable Coin Selector

- After you installed coin selector, select right serial port to link to the coin selector and enable it at here.

8.3.3 Set Coin Value

- For example, set coin value = 2 songs and payment system mode = enable song credit. After you insert a coin, you can order 2 more songs.
- For example, set coin value = 5 minutes and payment system mode = enable time credit. After you insert a coin, you can sing 5 more minutes.

8.3.4 Set Price of Coin

- For example, set coin price = 5\$, after a coin is inserted, 5\$ will be added to cashbox.

8.3.5 Insert a Coin

- If you hire somebody (waiter or waitress) to look after your machine, it is not necessary to install hardware coin selector on the machine at all.
- Customers purchase coins from the waiter. The waiter goes to the machine, logs into waiter setup page with waiter id and password, and then uses this function to setup coins for the customer.
- Click Jukebox -> Menu Window -> More function -> Waiter setup -> Input waiter id and password -> Credit setup -> Insert a coin. Press one time for one coin.
- Then corresponding song credit or time credit will be added for the customer.

8.3.6 Insert Coins

- Insert a number of coins in one time.
- Please refer to “Insert a coin”

8.4 Setup Credit

- Only waiter can setup credit for customers
- Click Jukebox -> Menu Window -> More function -> Waiter setup -> Input waiter id and password -> Credit setup



8.4.1 Add Song Credit

- Add song credit for the customers

- Only available while payment system mode = enable song credit

8.4.2 Add Time Credit

- Add time credit for the customers
- Only available while payment system mode = enable time credit

8.4.3 Clear unused Credit

- Clear all unused song credit or time credit

8.5 Cashbox System

- While a coin is inserted or credit is added to the machine, cashbox will calculate total amount and record it.
- Only admin can access cashbox system.
- Click Jukebox -> Menu Window -> More function -> Admin setup -> Input admin password



8.5.1 Audit Cashbox

- After one day's business, admin can audit total amount in cashbox, then collect money from waiter.
- Press Jukebox -> Menu Window -> More functions ->Admin setup -> Input admin password -> Audit cashbox.

8.5.2 Clear Cashbox

- After you collected money from the waiter, you can clear cashbox to start to audit new day's business.
- Press Jukebox -> Menu Window -> More functions ->Admin setup -> Input admin password -> Clear cashbox.

8.6 Advertisement System

- Advertisement is an important feature for your business.
- You can show advertisement while the machine is idle or insert advertisement between two songs.
- Advertising file can be randomly selected from a directory or can be randomly selected from Karaoke Library.
- Click Jukebox -> Options Window -> Advertisement to set up advertisement options.
- Advertisement can be started and stopped from middle of a media file. For example, if you want to insert 10-seconds-advertisement between two songs and the advertisement file should be started at 30 seconds, then you should set <Start position of advertising file> to 30 seconds, <End position if playlist is not empty> to 40 seconds.
- If you want to append 180-second-advertisement while the machine is idle, you should set <End position if playlist is empty> to 210 seconds. (Start position is set to 30 seconds already. $210-30=180$ seconds.)

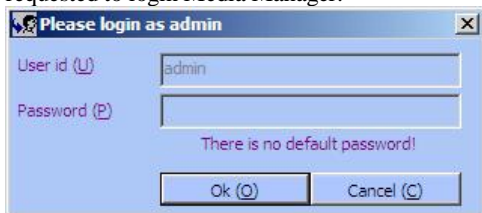


8.7 Security Feature

- Business Edition provides user id and password to protect your Media Manager and Jukebox. Nobody can change song information or access important features of Karaoke Jukebox without your promise.
- There are two kinds of users in Business Edition – admin and waiter.
- The system only has one admin user – admin
- Only admin user can manage users, set payment system and audit cashbox.
- The system could have more than one waiter user. You can add more waiter users by yourself.

8.7.1 Access Media Manager

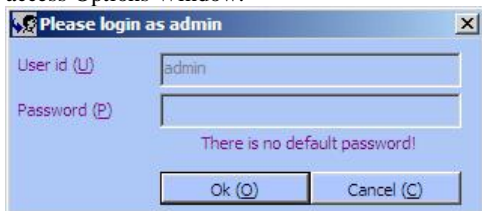
- Only Admin can login and use Media Manager. Admin password is requested to login Media Manager.



- There is no default password for your first time login, so just leave it blank and click <Ok> to login.

8.7.2 Access Options Window of Karaoke Jukebox

- Most important features are set up in Options Window. It is protected by password.
- Click Jukebox -> Menu -> Options, you should provide admin password to access Options Window.



- There is no default password for your first time login, so just leave it blank and click <Ok> to login.

8.7.3 Access Admin Page of Menu Window

- Most important features are set up in admin page of Menu Window. The admin page is protected by password.
- Select Jukebox -> Menu Window -> More functions -> Admin setup, and input admin password.



- There is no default password for your first time login, so just leave it blank and press <Ok> to login.
- After login as admin, you can exit system, restart or power off the computer.



8.7.4 Access Waiter Page of Menu Window

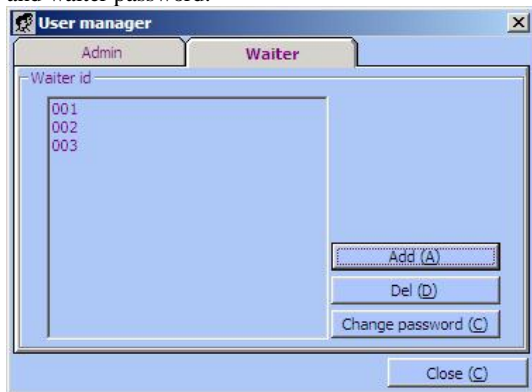
- Select More functions -> Waiter setup and input waiter id and waiter password. For example if waiter id is 001, waiter password is 1234, you need input 0011234 to login.
- After login as waiter, you can exit system, restart or power off the computer.

Notice – if you need to login waiter page of Menu Window with remote controller, please only use digital number for waiter id and waiter password since remote controller do not support alphabet input.

8.7.5 Manage User and Password

- Click Jukebox -> Options Window -> General -> Manage users to manage user and password.
- You can change admin password.
- You can add/delete waiter id and change waiter password.

Notice – We suggest you only use digital number for admin password, waiter id and waiter password.



Your best karaoke solution

Powered by Unify Technologies, all right reserved